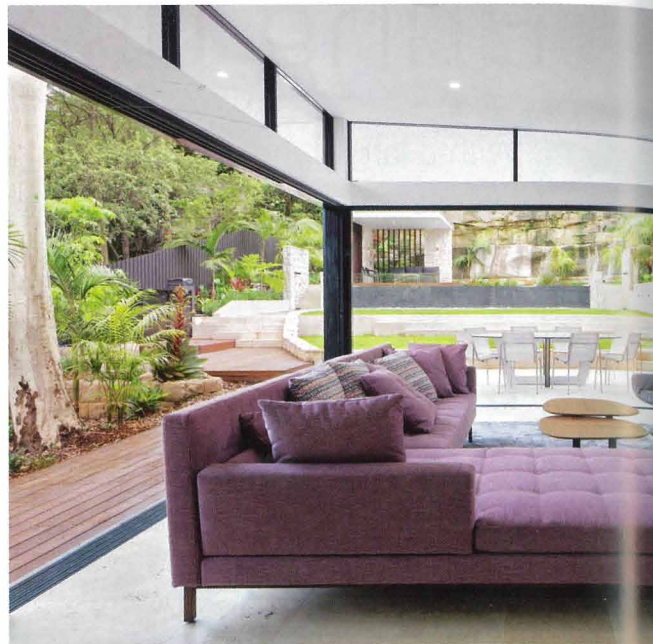


# CONTRACT HOUSES \$2.5 MILLION-\$3 MILLION

PROUDLY SUPPORTED BY BORAL CONSTRUCTION MATERIALS



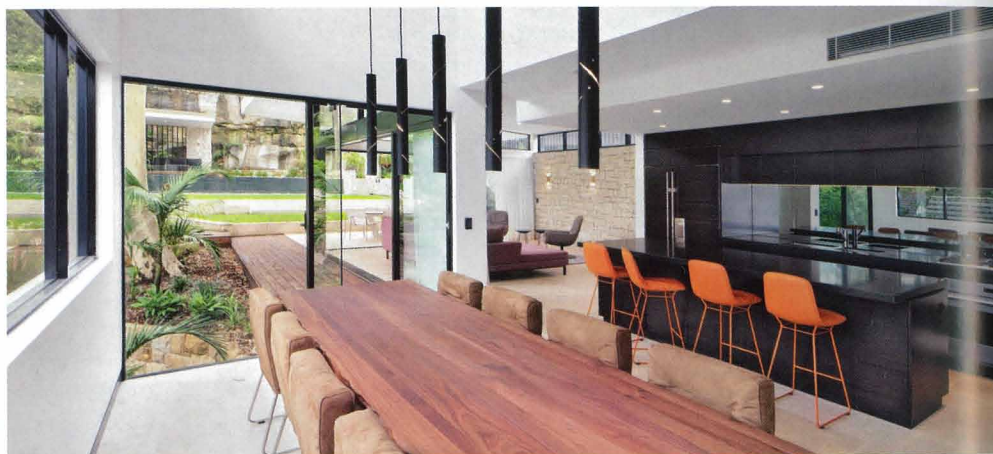
## BRINGING THE OUTSIDE IN

The concept of the Northbridge House was to create a long-term family home for the next 30 years. In simple terms, the construction involved building a three-level house, which required mass excavation for the lower level and rear ground floor and pool. The design and build drew a lot of inspiration from the clients' time in Bali, which reflects the idea of creating a sanctuary for their three daughters.

The house design is based on a number of interlocking pavilions that are sympathetic to the land's natural contours, bringing the outside in, with the intention of creating a place that is serene and peaceful for a family.

The passion behind the inspiration of this house was the attention to detail requested by the owners. This is reflected in the techniques used in the construction, ranging from herringbone travertine strips; endless internal stonework including a 6m-high dining room void to enable natural sunlight to form a stunning design centrepiece to the room; flush shadowlines to all walls, ceilings and doors throughout; and use of hardwood ranging from external cladding, screening and feature pieces through to the decking.

Other bespoke features include cantilevered internal stair treads, single-stringer feature stairs, cantilevered concrete slabs projected over the stone quarry floor bed, Balinese-style pool



pavilion to complete an infinity-edge pool reflecting the night lights of the cliff behind, and a tropical rainforest canopy to ensure continued privacy.

Consideration for environmental impact was applied to the grey water reusage, rainwater tanks, solar panels and the lush unique and extensive gardens have been individually thought out and created to form an urban sanctuary.

The Northbridge House truly is an inspiring and beautiful family home which has incorporated a multitude of features including the complete use of home automation throughout to control not only the lights, but also the multi-head air-conditioning system in every room, floor heating to all levels and rooms, motorised louvres, electric blinds and curtains, and the advantages of pushing a goodbye button to shut the house down when you leave. It is a complete oasis set in the middle of Sydney.

**JUDGES' COMMENTS:** This house incorporates great stonework inside and out, and the detailing at the junction between the stone and other materials is excellent.

The use of large aluminium and glass sliding doors provides a very light and airy feel. The house is very well finished in all areas.



### HR CONSTRUCTIONS PTY LTD

38 Kalang Road  
ELANORA HEIGHTS NSW 2101  
Tel: 0438 256 154  
Licence number: 247053C  
Design: Northbridge House